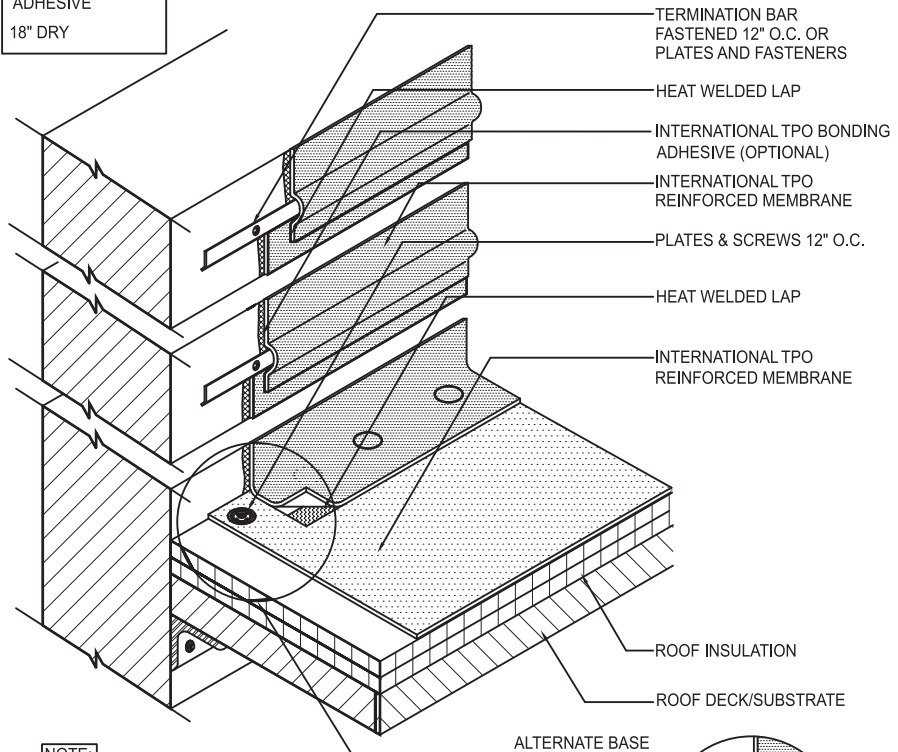


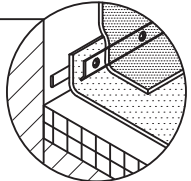


INTERMITTENT FASTENING KEY
 54" WITH BONDING ADHESIVE
 18" DRY



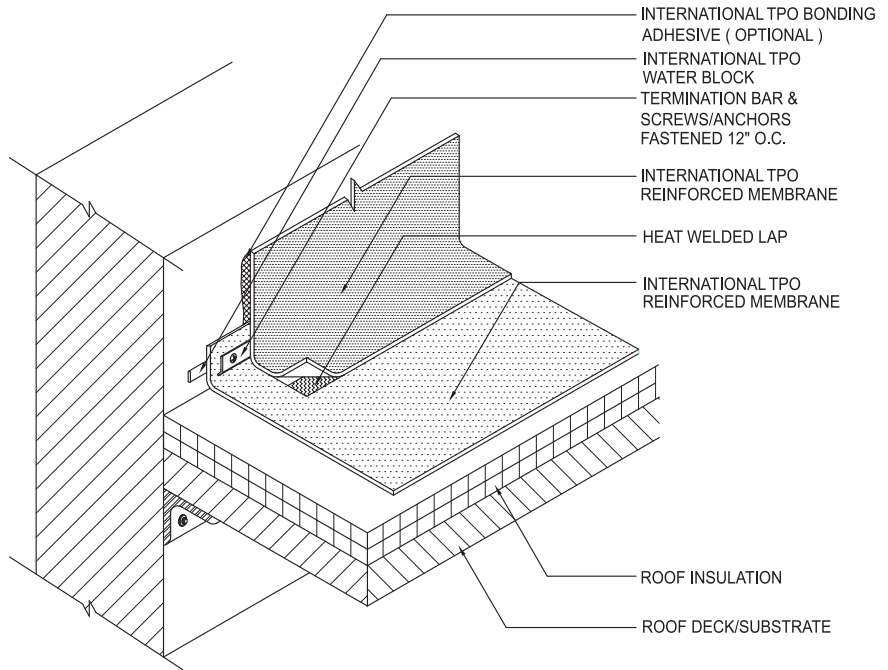
NOTE:

1. PLATES & SCREWS 6" O.C. REQ'D FOR BALLAST SYSTEMS.
2. 18" MAX. DIMENSION FOR LOOSE-APPLIED FLASHINGS.
3. 54" MAX. DIMENSION FOR FULLY ADHERED FLASHINGS.
4. APPLY INTERNATIONAL TPO CUT EDGE SEALANT TO ALL CUT REINFORCED TPO EDGES.



INTERNATIONAL TPO

HIGH WALL FLASHING



NOTE:

1. SCREWS/ ANCHORS 6" O.C. REQ'D FOR BALLAST SYSTEMS. (IF BALLAST SYSTEM USED IN A HIGH PRESSURE SITUATION ATTACH BAR 6" O.C.).
2. PLATES & FASTENERS MAY BE USED IN LIEU OF TERM BAR IN NON-PRESSURIZED SITUATIONS.
3. THIS DETAIL NEEDS TO BE USED FOR PRESSURIZED SITUATIONS.
4. APPLY INTERNATIONAL TPO CUT EDGE SEALANT TO ALL CUT REINFORCED CUT EDGE SEALANT TO ALL EDGES.

INTERNATIONAL TPO

ALTERNATE WALL BASE TERMINATION