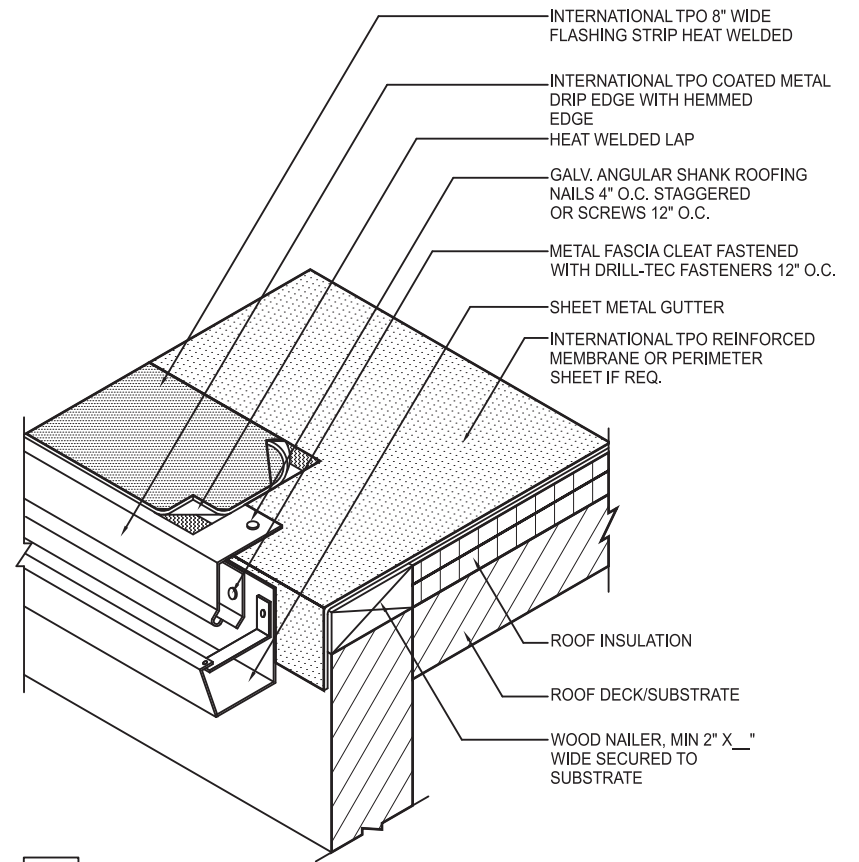


NOTE:

1. INTERNATIONAL TPO ADHESIVE/ASPALT (NOT SHOWN) REQ'D FOR FULLY ADHERED SYSTEMS.
2. TERMINATION BAR MUST BE FASTENED 6" O.C. FOR THIS DETAIL.

INTERNATIONAL TPO

TERMINATION BAR ROOF EDGE



NOTE:

1. APPLY INTERNATIONAL TPO CUT EDGE SEALANT TO ALL CUT REINFORCED TPO EDGES.

INTERNATIONAL TPO

GUTTER WITH COATED METAL EDGE

