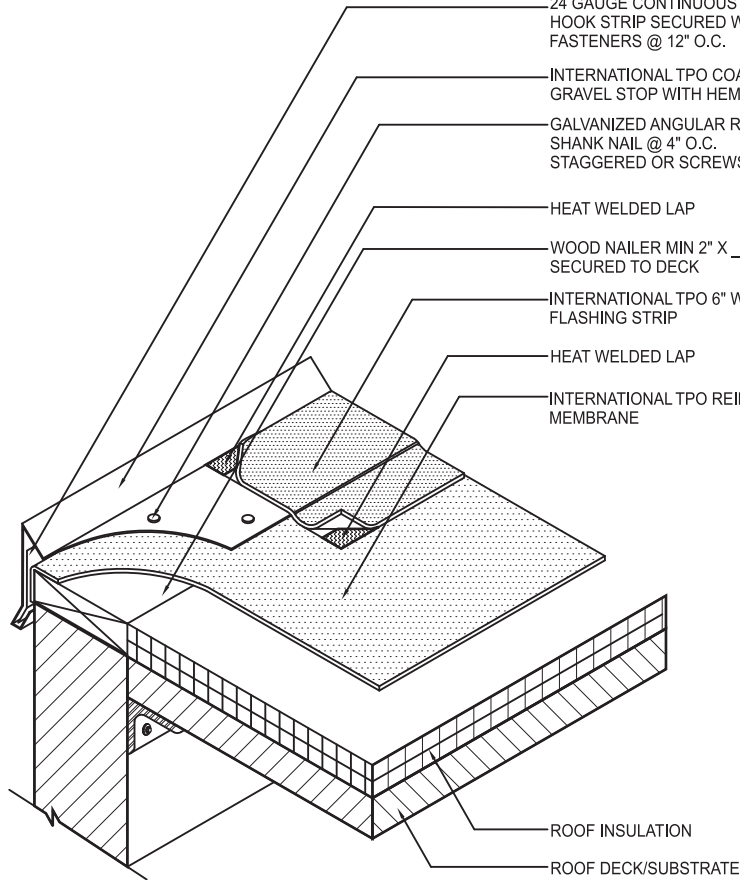


- 24 GAUGE CONTINUOUS HOOK STRIP SECURED WITH FASTENERS @ 12" O.C.
- INTERNATIONAL TPO COATED METAL GRAVEL STOP WITH HEMMED EDGE
- GALVANIZED ANGULAR RING SHANK NAIL @ 4" O.C. STAGGERED OR SCREWS 12" O.C.
- HEAT WELDED LAP
- WOOD NAILER MIN 2" X \_\_\_" SECURED TO DECK
- INTERNATIONAL TPO 6" WIDE MEMBRANE FLASHING STRIP
- HEAT WELDED LAP
- INTERNATIONAL TPO REINFORCED MEMBRANE



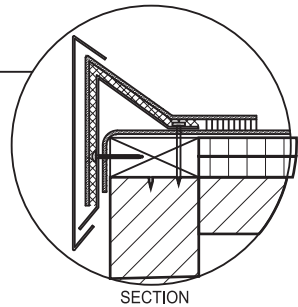
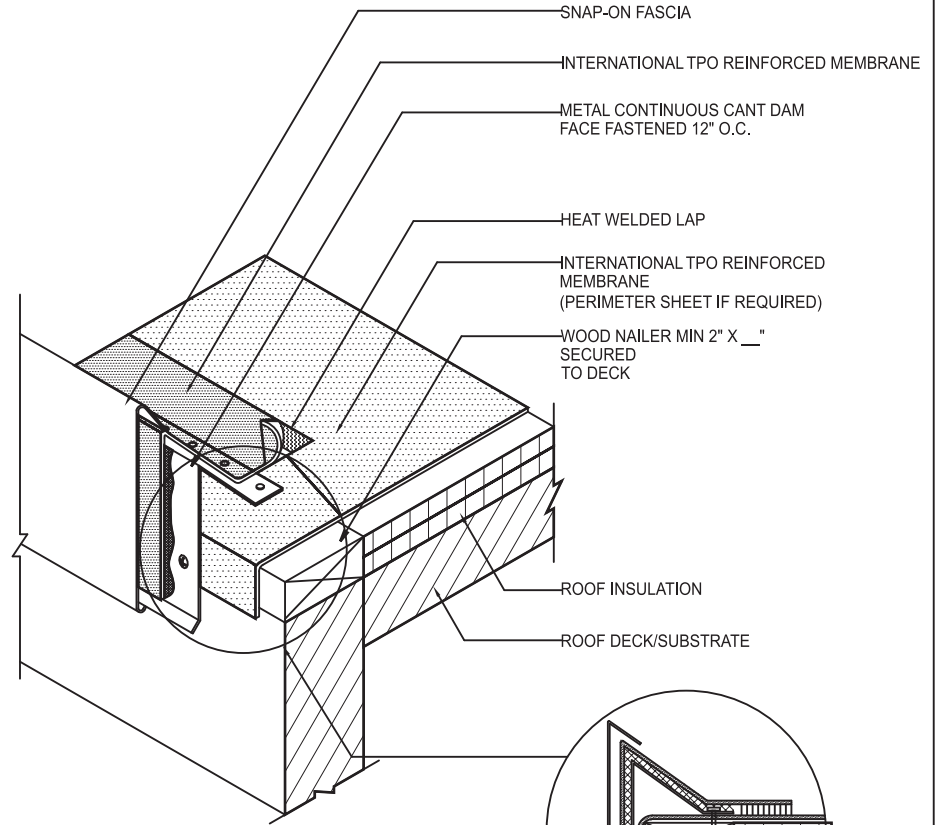
**NOTE:**

1. APPLY INTERNATIONAL TPO CUT EDGE SEALANT TO ALL CUT REINFORCED TPO EDGES.

**INTERNATIONAL TPO**

**GRAVEL STOP COATED METAL ROOF EDGE**

- SNAP-ON FASCIA
- INTERNATIONAL TPO REINFORCED MEMBRANE
- METAL CONTINUOUS CANT DAM FACE FASTENED 12" O.C.
- HEAT WELDED LAP
- INTERNATIONAL TPO REINFORCED MEMBRANE (PERIMETER SHEET IF REQUIRED)
- WOOD NAILER MIN 2" X \_\_\_" SECURED TO DECK



**NOTE:**

1. APPLY INTERNATIONAL TPO CUT EDGE SEALANT TO ALL CUT REINFORCED TPO EDGES.

**INTERNATIONAL TPO**

**SNAP-ON FASCIA ROOF EDGE**